



## Announcement

The State Y. M. C. A. will open its Twenty-fifth season of summer camp for the Youth of Kentucky at Camp Daniel Boone on July 1st, 1936. Camp Daniel Boone is located on the Kentucky River 18 miles south of Lexington on the Tates Creek Pike and 12 miles south east of Nicholasville. The Post Office is Valley View, Ky.

### LEADERSHIP

The Camp Leadership for this 1936 season will consist of several of the best known Workers in the State. The Program Director for the first Boys' period (July 1-15) will be Mr. T. Aubrey Morse, General Secretary of the Community Y. M. C. A., Lexington, for the second Boys' period (July 15-29), Mr. P. P. Alexander, General Secretary, Y. M. C. A., Frankfort, and for the Girls' period July 30 to August 13, Miss Nellie Frank Hays of Berea.

Other Leaders during the summer will be Mr. W. H. Adkins, Physical Director, Y. M. C. A., Frankfort and Mr. Wm. K. Heb, Assistant Boys' Work Secretary, Louisville Central Y. M. C. A.

Swimming, Life Saving and First Aid will be in charge of Ed. Lotspeich, Jr., a registered examiner for both Y. M. C. A. and Red Cross.

An Adult Counsellor lives in each tent with seven campers thus providing very close fellowship and good supervision.

### PROGRAM

The daily schedule of activities starting with the morning dip before breakfast and continuing thru the evening devotions and taps, is filled with helpful activities designed to promote the development of a healthy body, a keen mind and a Christ-like spirit. Ample facilities are available for tennis, volley ball, base ball, ping pong, quoits, hiking, nature study, swimming, boating and other out-door activities common to Summer Camps.

The swimming and boating are always under careful supervision and Instructors are provided for beginners in these sports.

Too frequent visiting of camp on the part of parents or friends interferes with the helpfulness of our regular program and we, therefore, urge that visiting be confined to Sunday afternoon, when visitors will be welcomed.

### HEALTH

Every precaution is taken to safeguard the health of campers, the drinking water being filtered and purified by scientific means, the meals being carefully planned and well balanced. The sending of food from home often defeats our purpose in caring for health and we, therefore, ask that parents and friends refrain from sending food to campers. The Camp is equipped with sanitary plumbing system.

Comfortable rest is a requisite to good health and our tents are equipped with iron beds so that each camper sleeps on regular springs and mattress, thus insuring good sleep.

## RATES

The rate for a full period of two weeks is \$15.00 and all campers are urged to stay this length of time. However, if this is not possible, campers may be taken for one week for \$8.00. No campers accepted for less than one week.

## DATES

The first Boys period will start with the noon meal on Wednesday, July 1st and will close after breakfast on Wednesday, July 15th. The second Boys period will start with the noon meal on Wednesday, July 15th and will close after breakfast on Wednesday, July 29th. The Girls period will start with the noon meal Thursday, July 30th and close after breakfast on Thursday, August 13th.

## GENERAL INFORMATION

Registration blanks and health certificates may be secured from the office of The State Y. M. C. A., 345 Y. M. C. A. Building, Louisville, Ky., or from your nearest Local Y. M. C. A. Secretary.

Campers should bring clothing suitable for out-of-door life with a sweater, swimming suit, warm blankets, sheets, towels, pillow and pillow cases. The beds are equipped with mattresses with no additional cost and for a small sum we can rent to the campers, blankets and linens on the following basis for a full period or any part thereof: Blankets 25c each, Sheets 15c each, pillows 15c each and pillow cases 10c each.

Since the Railroad into Camp was discontinued several years ago, practically all of our campers come by auto, but any who do come by train can be met by our camp car in Lexington if we are notified at Camp Daniel Boone, Valley View, Ky. at least one day in advance of arrival. The charge for this transportation will be 50c per passenger.

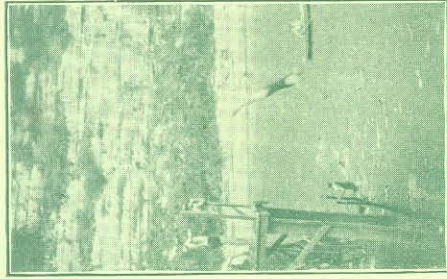
For further information write your nearest Local Y. M. C. A. Secretary or your District Y. M. C. A. Secretary, Wm. N. Ewald, Y. M. C. A., Covington; E. L. Ludwig, Y. M. C. A., Ashland; E. J. Warms, Lebanon or

State Y. M. C. A. of Kentucky,

345 Y. M. C. A. Bldg., Louisville, Ky.

E. S. Lotspeich, State Secretary.

Mrs. P. M. Bailey, Office Secretary.



# Camp Daniel Boone

## 25th Summer

on the

### KENTUCKY RIVER

## For Boys and Girls

July 1 — August 13, 1936